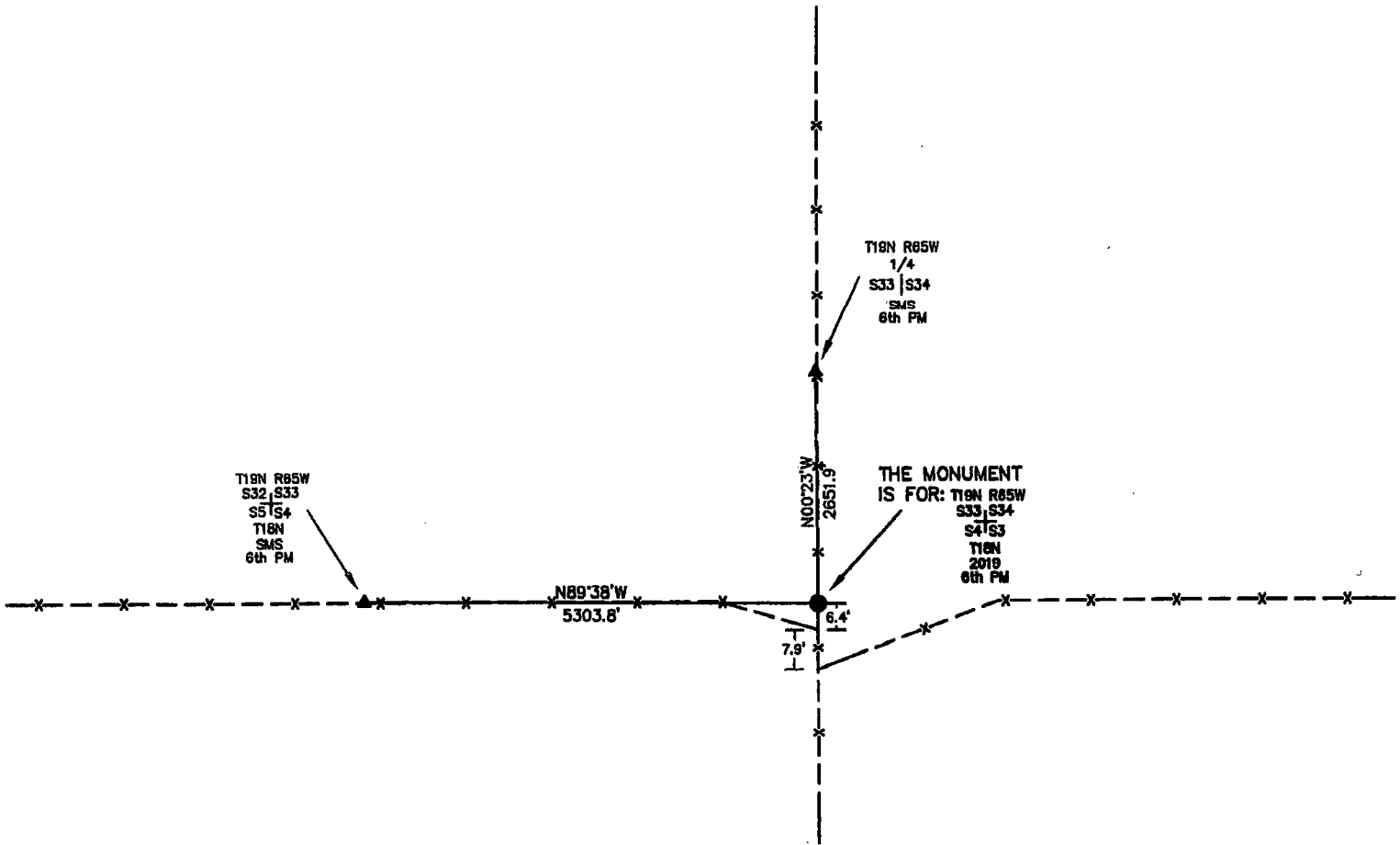


# State of Wyoming Corner Record

**CORNER PERPETUATION AND FILING ACT,**  
Regulations of the Board of Registration for Professional Engineers and Land Surveyors.)

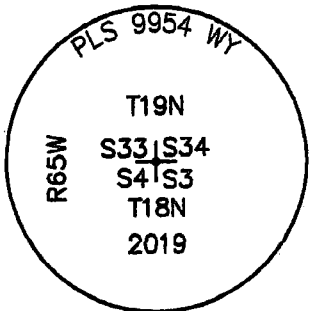
Reverse side of this form may be used if more space is needed.

Record of original survey and citation of source of historic information (if corner is lost or obliterated). Description of corner monumentation evidence found and/or monument and accessories established to perpetuate the location of this corner. Sketch of relative location of monument, accessories, and reference points with course and distance to adjacent corner(s) (if determined in this survey). Method and rationale for reestablishment of lost or obliterated corner.



**NOTE:**  
LINES SHOWN ARE BETWEEN MONUMENTS AND MAY OR MAY NOT BE SECTION OR SECTION SUBDIVISION LINES.

SET THE MONUMENT FOR THIS CORNER COMMON TO 4 SECTIONS WHICH IS A 2019 2.5" PRIVATE ALUMINUM CAP PROTRUDING 0.8" ABOVE THE GROUND ON A #6 REBAR AT THE INTERSECTION OF FENCES WITH ADDITIONAL STONES PILED AROUND THE MONUMENT.



**CORNER MONUMENT SYMBOLS**

- RECORD IS FOR THIS CORNER MONUMENT.
- ▲ A RELATED CORNER OR WC MONUMENT.

SCALE 1"=2000'  
(EXCEPT IN TRIVIAL CASES)  
BEARINGS ARE RELATED TO WGS 84 WITH GPS OBSERVATIONS  
DRAWN BY: K.H. P.C. L. SHANKS  
COUNTY: LARAMIE & GOSHEN

**Marking on the Monument**

Date of Field Work: 03/28/19 Office Reference: \_\_\_\_\_

**CROSS INDEX DIAGRAM**

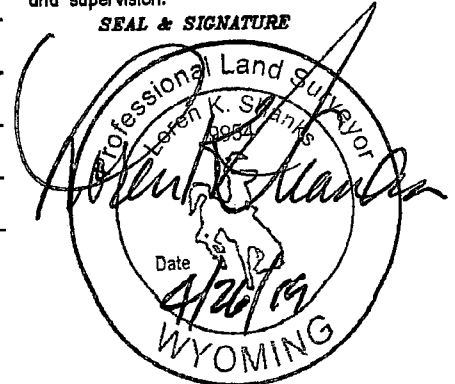
	1	2	3	4	5	6	7	8	9	10	11	12	13	14	15	16	17	18	19	20	21	22	23	24	25
A																									
B																									
C																									
D																									
E																									
F																									
G																									
H																									
J																									
K																									
L																									
M																									
N																									
O																									
P																									
Q																									
R																									
S																									
T																									
U																									
V																									
W																									
X																									
Y																									
Z																									

Firm/Agency, Address

**UELS, LLC**  
3313 35TH Avenue  
Suite B  
Evans, Co 80620  
Telephone Number: 970-506-1544

This corner record was prepared by me or under my direction and supervision.

SEAL & SIGNATURE



RECP #: 754829  
RECORDED 6/10/2019 AT 9:57 AM BK# 2624 PG# 1193  
Debra K. Lee, CLERK OF LARAMIE COUNTY, WY PAGE 1 OF 1

CORNER COMMON TO 4 SECTIONS  
Corner Name: SOUTHEAST CORNER OF SECTION 33 Section: 33 T 19 N R 65 W; 6TH P.M. Cross Index No.: Z-13  
SBRPEPLS/PLSW: March 1994 (CLCR...SJA)